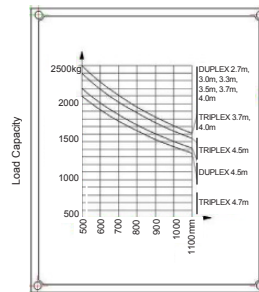
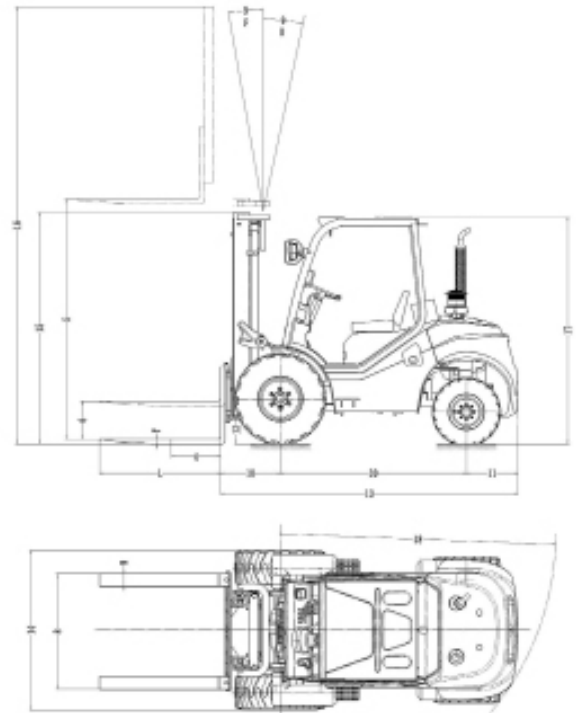




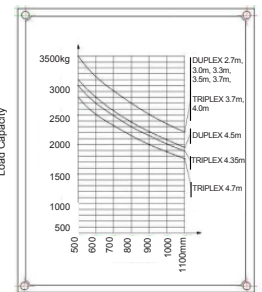
## 2.5T - 3.5T ROUGH TERRAIN DIESEL FORKLIFTS

GENERAL SPECIFICATIONS		
Model	FDT25T-CW3	FDT35T-CW3
Power Type	Diesel	
Rated Capacity (kg)	2500	3500
Load Centre (mm)	500	
CHARACTERISTICS AND DIMENSIONS		
Lift Height (mm)	3000	
Free Lift Height (mm)	160	165
Fork Size LxWxT (mm)	1100x122x40	1220x122x40
Fork Regulating Range Min./Max.	250/1160	
Mast Tilt Angle F/R (Deg)	10°/12°	
Front Overhang (mm)	586	601
Rear Overhang (mm)	520	
Min. Ground Clearance (mm)	270	
Length to Face of Fork (without Fork) (mm)	2946	2956
Overall Width (mm)	1557.5	1600.5
Mast Lowered Height (mm)	2265	2330
Mast Extended Height (with Backrest) (mm)	4175	4305
Overhead Guard Height (mm)	2256.5	2276
Turning Radius (outside) (mm)	2783	
Min. Right Angle Stacking Aisle Width (add Load Length and Clearance) (mm)	4795	4805
PERFORMANCE		
Travel (Unladen/Laden) (km/h)	20/18	22/22
Lifting (Unladen/Laden) (mm/s)	600/570	480/450
Lowering (Unladen/Laden) (mm/s)	420/445	400/500
Max. Drawbar Pull (Laden/Unladen) (KN)	17000	
Max. Gradeability (Loaden) (%)	20	16
TYRE		
Front Tyre	12-16.5-14PR	14-17.5-14PR
Rear Tyre	27x10-12-12PR	27x10-12-12PR
Front Tread (mm)	1205.5	
Rear Tread (mm)	1205	
Front Tyre Pressure (bar)	680	680
Rear Tyre Pressure (bar)	650	650
Seat to Ceiling inside Height (mm)	1010	
Wheelbase (mm)	1880	
WEIGHT		
Self Weight (kg)	4465	5180
Laden Weight	Front Axle	5990
Distribution (kg)	Rear Axle	975
Unladen Weight	Front Axle	1785
Distribution (kg)	Rear Axle	2680
POWER AND TRANSMISSION		
Battery Voltage/Capacity (V/Ah)	12/90	12/90
Engine	Model	4TNE98-BQFLC
	Manufacturer	YANMAR
	Rated Output/RPM (kW)	42.1/2300
	Rated Torque/RPM (N·m)	186-206/1700
	No. of Cylinders	4
	BorexStroke (mm)	98x110
	Displacement (L)	3.318
Transmission	Fuel Tank Capacity (L)	55
	Manufacturer	China
	Type	YQXD30-XH    YQXD40MKS-XH
	Stage (F/R)	1/1
Operating Pressure (For Attachments) (Mpa)	20	
Min. Right Angle Stacking Aisle Width (mm)	2615	

### LOAD CHART



2.5 T Load Curve



3.5 T Load Weight Curve

MAST OPTIONS	
Duplex	FFL Triplex
3.3m	3.7m
3.5m	4.0m
3.7m	4.7m
4.0m	
4.5m	



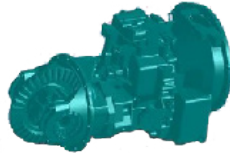
## STANDARD FEATURES

### TWO-WHEEL DRIVE SYSTEM

Forklifts Australia Rough Terrain Forklift is a tough, compact forklift with a two-wheel drive system. The forklift is based on a conventional forklift, but built for rough terrain performance.

### ENGINE

Forklifts Australia's 2.5T and 3.5T Rough Terrain Forklifts adopt Yanmar 4TNE98(EU11) diesel engine. It is world renowned for superior performance, economy and longevity. Timed glow plug cold start in cold climates allows faster warm up and fuel savings. Yanmar engine conforms to all world environmental EPA standards.



### TRANSMISSION WITH DIFFERENTIAL LOCK

The power shift transmission with torque converter features two inching pedals, brake control and full reversal allowing faster cycle times. The differential is specifically designed for rough terrain and features automatic differential lock providing ultimate traction during inclement weather conditions and rough operating surfaces.



### STEER AXLE

The oscillating steel axle allows either wheel to step over obstacles keeping the machine and load level. Floatation drive and steer tyres provide excellent traction and stability. The steering angle is from 54° to 78° with very small turning radius.

### APPEARANCE: MODERN DESIGN

Forklifts Australia's Rough Terrain Forklift design has adopted a clear and concise appearance with a modern design.



### FLOATING SYSTEM

Forklifts Australia's Rough Terrain Forklifts adopt a floating R.O.P system. Engineers have adapted the latest ergonomics for operator convenience. A superior full floating operator cabin is installed with rubber damping instead of the traditional rigid design. This greatly reduces machine vibration and offers a smoother ride over rough terrain and reduces operator fatigue. Travel and hydraulic controls are positioned forward for most ergonomic natural operation. The fully adjustable tilt steering wheel and fully suspension seat with seat belt accommodate all size operators.

### MAST: WIDE VIEW AND DURABLE

The 2.5T Rough Terrain Forklift's mast width is 1557.5mm. The 3.5T Rough Terrain Forklift's mast width is 1600.5mm. Maximum mast tilt angle F/R reaches to 10°/12°. The wide view mast provides excellent through-the-mast visibility improving the work efficiency and allowing safe operation of the forklift. Beam rails and heavy tie bar construction reduce twisting while handling long, lateral loads on rough surface applications. Sealed bearing load rollers and are externally adjustable to compensate for long term wear. Side thrust rollers on top and bottom of all rails and carriage side thrust rollers reduce mast roller maintenance and replacements. A clear view to the forks and surrounding area is optimised through the wide view mast. Excellent rearwards visibility is enhanced with the sloping rear counterweight and fenders. The dash and LED monitor panel is mounted low and in line of sight for operator convenience.