

# LTAR7200 REMOTE SERIES LED LIGHTING TOWER

## SPECIFICATIONS



### ENGINE

Type  
Engine Power (kW)  
RPM  
Fuel Consumption (L/h)

### KUBOTA D905 DIESEL

Vertical 3-cylinder in-line liquid cooled  
6  
1500  
1

### ALTERNATOR

Model  
Rated Power

SD 16B/4-pole brushless  
5.5kW

### LIGHT FEATURES

Light (W)  
Luminous Flux (lm)  
Longevity (hrs)

LED 10 x 300  
33000  
20000

### MAST FEATURES

Max. Erection Height (m)  
Hydraulic Rotation  
Operation Type

9  
YES included  
Hydraulic

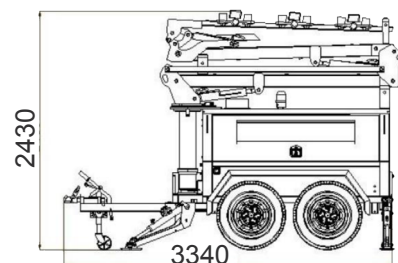
### DIMENSIONS AND WEIGHT

Dimensions (L x W x H) (mm)  
Weight (kg)

3340 x 1900 x 2430  
1950

## STANDARD EQUIPMENT

- 48 Volt DC
- 10 x 300W LED lights 3 years warranty
- 100L plastic fuel tank – lower fuel. Fuel Tank options 100-220L consumption 1.1L/h (up to 25 day runtime, based on 8 hour shifts)
- SMS remote reporting – GPS option
- Control panel - state of the art
- Full hydraulic tower lift and rotation
- Heavy-duty trailer construction, dual-axle 4 x 16 inch tyres
- 4 hydraulic stabiliser legs
- Cable track for wiring protection
- IP65 rated for all lights and control box
- Battery isolator
- Emergency stop



**REMOTE PROJECT SPECIALISTS**  
SAFER. GREENER. SMARTER SOLUTIONS.

**LIGHT LUX CHART**

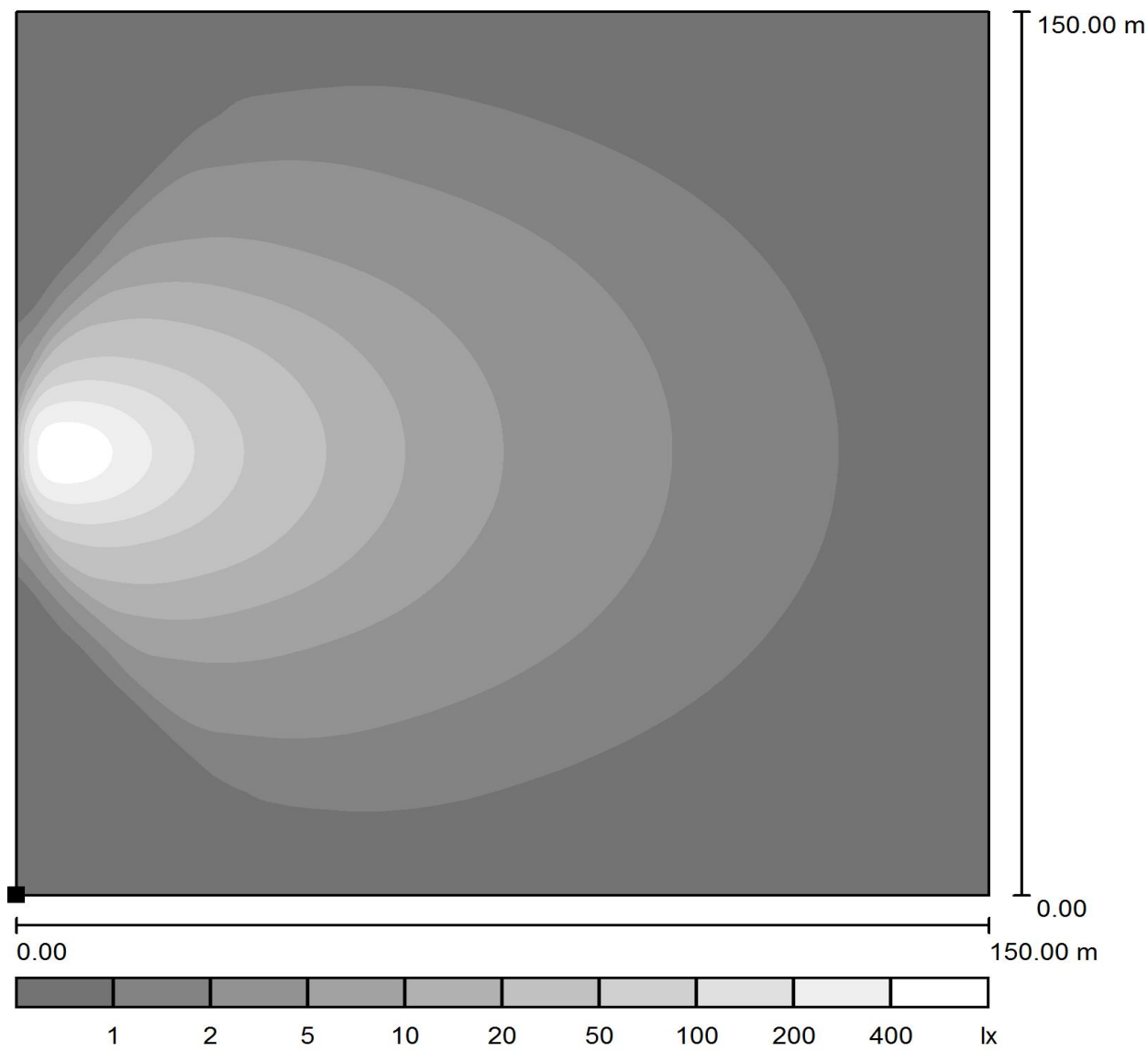

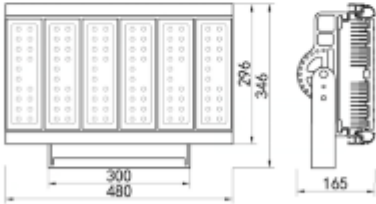
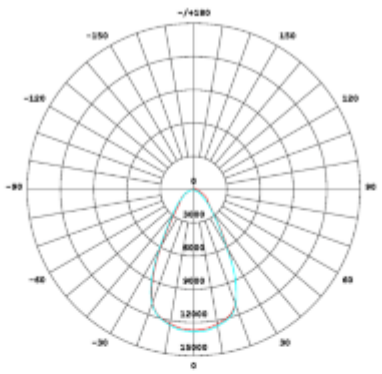
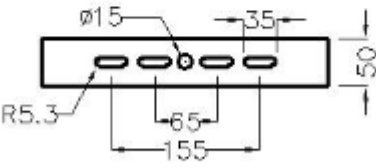


Photo		Data	Name	LED flood light
			Model No.	JR309-300W
			Power	LED 300W
			Installation mode	U bracket
			Work temperature	-40℃~50℃
			Work voltage	DC48V
			Rated life	30000 hrs
Dimension		Standards	IP	IP67
		Main parts	Housing	Aluminum extrusion profiles
			Radiating module	Aluminum radiator
			Optical part	Optical lens
			Color	Silver
Photometrics		Optical Parameter	Beam angle	60°
			Luminous flux	33000Lm@5700K
			Color temperature	5700±300K
			CRI	RA≥70@5700K
		Light Source	LED Chip	Samsung
			Name	Single LED
			Specification	18PCS×6
Accessories		Driver	Brand	JR Lighting
			Installation mode	External
			Specification	Constant current driving
		Packing information	Carton size	580*440*240
			Net Weight(Kg)	11.7KG
			Gross Weight(Kg)	12.9KG
			Accessories	Installation instruction
			Packing	Carton