

STORM SERIES

YNS275V SPECIFICATIONS 275KVA



Australian Design.
Powered by

**VOLVO
PENTA**

GENERAL

Model	YNS275V
Power Type	Diesel
Prime Power (kW/kVA)	200/250
Standby Power (kW/kVA)	220/275

ENGINE

Engine Make and Model	VOLVO TAD754GE
Engine Type	L Type, 6cyl
Fuel Consumption (L/h)*	57
Aspiration	Turbo-charged, Low temp after-cooled
Bore (mm) x Stroke (mm)	108 x 130
No. of Cylinders	6
Displacement (L)	7.15
Compression Ratio	18:1
Governor Type	AS440
Lubricating Oil Capacity (L)	34

*Fuel Consumption is based on 100% load

ALTERNATOR

Model	SL274K1
Frequency (Hz)	50
Rate Power (kW/kVA)	200/250
Power Factor	0.8
Exciter Type	Self-excited
Voltage Regulator	AS440
Voltage Regulation	+1.0%
No. of Phases	3
Insulation	Class H
Protection	IP 21
Altitude (m)	1000

UNIT

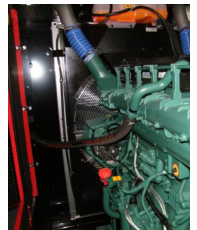
Dimensions L x W x H (m)	4.2 x 1.5 x 2.4
Dry Weight (kg)	5300
Sound at 7m/dB	83

STANDARD FEATURES

- Double-layer muffler
- 3 way fuel (external fuel tank connector)
- Earth Bar
- Controller is in IP65 plastic box
- Doors on radiator for easy access
- Water trap
- Independant BUS connection
- Spark arrestor
- Battery Isolator
- PMG
- Red in color
- 24hr fuel tank

ASSEMBLY

The engine and alternator are closed coupled by means of an SAE flange. A full torsional analysis has been carried out to guarantee no harmful vibration will occur. Anti-vibration pads are affixed between engine alternator feet and base frame. Rubber diagonal isolators are specifically designed to reduce engine and alternator vibration and prevent distortion in the voltage and harmonic output of the generator. All iron and steel surfaces of the canopy fabrication have been sand blasted and then powder coated, which provides an excellent corrosion resistant surface.



CONTROL SYSTEM

The DSE8610 is an easy to use multi-generator loadshare system, designed to synchronise up to 32 generators including electronic engines. The DSE8610 monitors the generator and indicates operational status and fault conditions, automatically starting or stopping the engine on load demand or fault condition. System alarms are annunciated on the LCD screen (multiple language options available), illuminated LED and audible sounder.)



QUALITY STANDARDS

Our generator sets are compliant with all the main standards, such as ISO8528, ISO14000, GB755, BS5000, VDE0530, ISO3046, IEC34-1, AS3000.

WARRANTY POLICY

12 months, 1200 hours as per generator. Generators Australia Warranty Policy. All photos are for marketing purposes only.