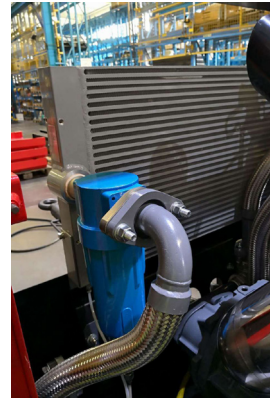
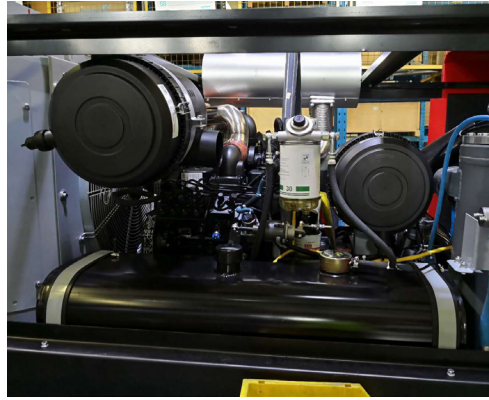


GP118-7

PORTABLE SCREW AIR COMPRESSOR



GP118-7 PORTABLE SCREW AIR COMPRESSOR

TECHNICAL SPECIFICATIONS

Compressor Model	GP118-7
Free Air Delivery	11.8 m ³ /min (420cfm)
Working Pressure	7 bar
Max/Min Speed	2200-1500rpm
Noise Level (Sound Pressure)	<80dB(A)
Capacity of Fuel Tank	185L
Air Outlet Valves - Qty X Size	3XG3/4" 1XG2 1/2"

ENGINE

Manufacturer	Cummins
Engine Type	4BTAA3.9-C125
Cylinders	4
Output at Nominal Speed	93kw

DIMENSIONS & WEIGHT

Length With Towing Device (Min)	2862mm
Length With Horizontal Tow-Bar	3651mm
Width	1790mm
Height	1908mm
Operational Weight (Full Fuel Tank)	1680kg



AUSTRALIAN DESIGN
POWERED BY CUMMINS