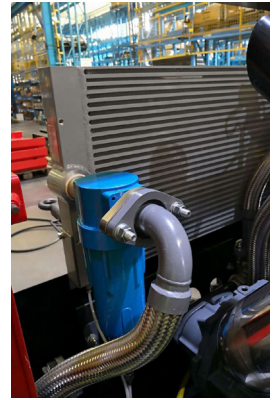
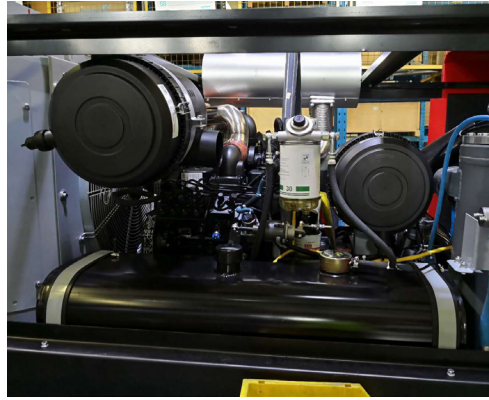


# GP100-12

## PORTABLE SCREW AIR COMPRESSOR



### GP100-10 PORTABLE SCREW AIR COMPRESSOR

#### TECHNICAL SPECIFICATIONS

Compressor Model	GP100-12
Free Air Delivery	10m <sup>3</sup> /min (353cfm)
Working Pressure	12 bar
Max/Min Speed	2200-1500rpm
Noise Level (Sound Pressure)	<80dB(A)
Capacity of Fuel Tank	185L
Air Outlet Valves - Qty X Size	3XG3/4" 1XG2 1/2"

#### ENGINE

Manufacturer	Cummins
Engine Type	4BTAA3.9-C125
Cylinders	4
Output at Nominal Speed	93kw

#### DIMENSIONS & WEIGHT

Length With Towing Device (Min)	2862mm
Length With Horizontal Tow-Bar	3651mm
Width	1790mm
Height	1908mm
Operational Weight (Full Fuel Tank)	1680kg



AUSTRALIAN DESIGN  
POWERED BY CUMMINS