

LIGHTING TOWER GP360L AREA LIGHT



 DURABLE & COST
EFFECTIVE

 BUILT FOR INDUSTRY

 PORTABLE & EASY TO
TRANSPORT

 AUSTRALIAN DESIGNED
& ENGINEERED

PRODUCT SPECIFICATIONS

GENERAL

Model	GP360L - Area Light
Lumen Output	245,000/208,000 with diffuser
Mast Height	4.5 Metres
Mast Type	Cable
Lights	4 x 300w LED Modules
Coverage	13,100m ² at 5 lux

POWER

Voltage	48V DC / 240V 10A AC input
Wattage	1440W DC / 1680W AC

OPERATIONAL DATA

Wind Rating	100km/h
Working Temperature	0 to 50°C
Lifting	Fork pocket and lifting lugs

UNIT INFORMATION

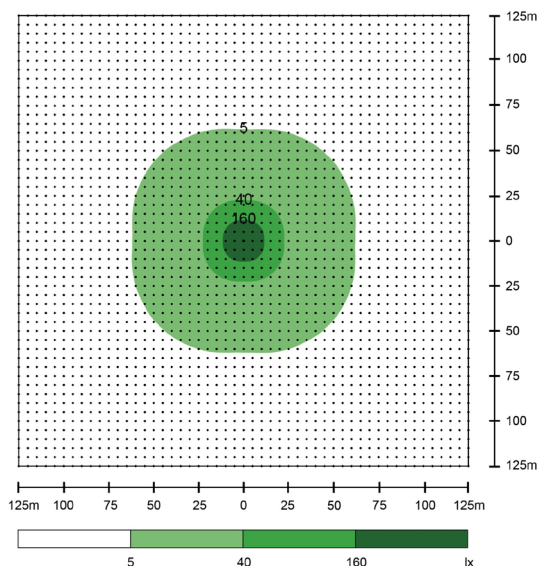
Dimensions (Stowed)	1000 x 1000 x 2000 (LxWxH)
Dimensions (Deployed)	1000 x 1000 x 5100 (LxWxH)
Weight	800kg

FEATURES

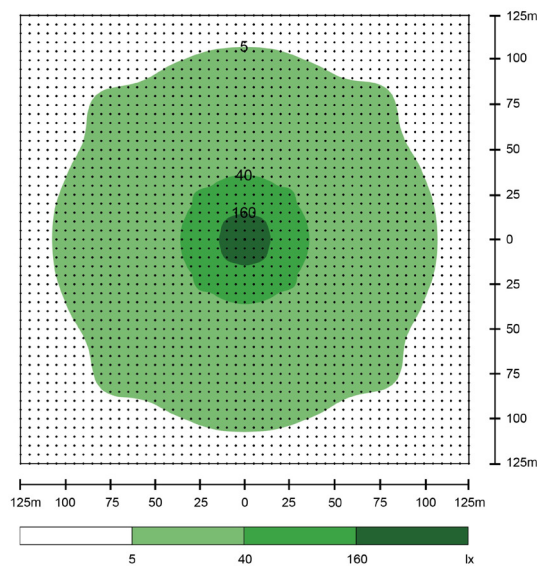
- Timer
- Day/Night Sensor
- Fork pockets
- Lifting lugs



With Diffuser



Without Diffuser



GP360L-Area-Light-V2-0525